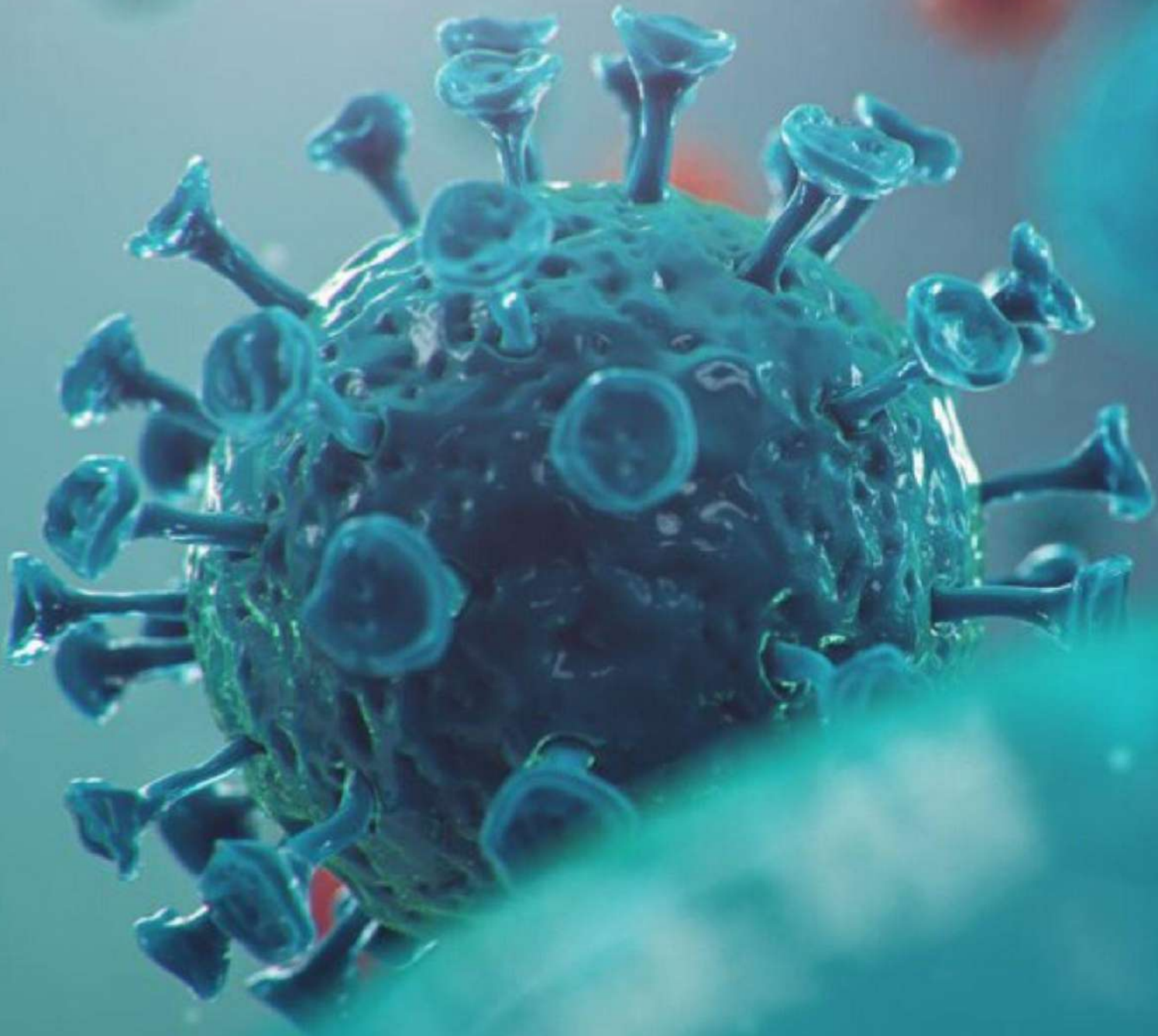


# COVID-19

Products for Research and Diagnostics

Vers. 2.1, May 2020



# INDEX



## **PRODUCTS FOR IN VITRO DIAGNOSTICS**

<i>Sample collection &amp; storage kits</i>	<b>3</b>
<i>Methods for detecting circulating SARS-CoV-2</i>	<b>4</b>
<i>Antibody tests detecting COVID-19 antibodies</i>	<b>5</b>

# Sample collection and storage kits

NEW

## Disposable Virus Collection Tube & Transportation, Preservation Medium (Inactivated)



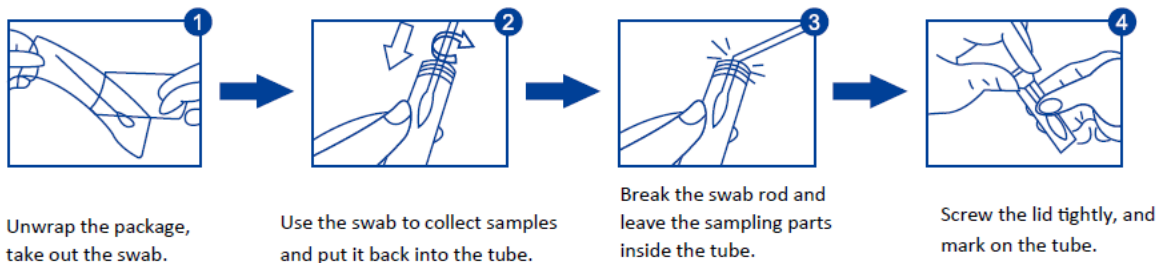
Applicable for the collection and transportation of clinical flu, avian flu, HFMD, measles and other virus samples as well as mycoplasma, urea plasma, chlamydia and other samples.

### Main components:

- Including 1 swab and 1 tube containing medium.
- Classic medium: HBSS, antibiotics, BSA, cryoprotectant, biological buffer, phenol red.
- Inactivated medium: Guanidine salt (denaturant), reducing agent, biological buffer, chelating agent, surfactant, buffer.

### Sample requirements:

1. Applicable sample: Clinical samples such as oral swab, nasopharyngeal swab, saliva, sputum;
2. Storage and transportation of samples: Please pay attention to the storage period when using. Specimens should be transported to the corresponding laboratory within 2 working days after collection, and the storage temperature is 2-8 ° C; If it cannot be delivered to the laboratory within 48 hours, it should be stored at -80 ° C or below, and ensure that the collected specimens are delivered to the corresponding laboratory within 1 week. Specimens should avoid repeated freeze-thaw cycles.



Cat. No.: 19-1262; Disposable Virus Collection Tube & Transportation, Preservation Medium, 2.0mL

# Methods for detecting circulating SARS-nCoV-2

NEW

## Glenbio qPCR SARS-CoV-2



Glenbio qPCR SARS-CoV-2 is a ready-to used test which contains in each well all the necessary reagents for real-time PCR assay in a stabilized format. In addition, an internal control allows the detection of a possible reaction inhibition. For the Glenbio qPCR SARS-CoV-2, the amplification of the target sequence ORF1ab gene is detected through the FAM channel, the amplification of the target sequence N gene is detected through the ROX channel whereas the internal control (IC) in HEX, VIC or JOE channel (depending on the equipment used).

The assay has been validated for the following extraction kits:

- Maxwell® 16 Viral Total Nucleic Acid Purification Kit, using the Maxwell® 16 instrument (Promega). Total.
- Nucleic Acid Isolation (TNAI) Kit, using COBAS® AmpliPrep (Roche).
- MagDEA Dx SV kit, using the magLEAD® 12gC instrument (Precision System Science Co.).
- MagCore® Viral Nucleic Acid Extraction kit, using the MagCore® HF16 automated Nucleic Acid Extractor System.
- Viasure RNA-DNA Extraction kit (VIASURE)

Cat. No. GLS96LP; [Glenbio qPCR SARS-CoV-2 96-well plate, low profile block thermocyclers.](#)

Cat. No. GLS96HP; [Glenbio qPCR SARS-CoV-2 96-well plate, high profile block thermocyclers.](#)

Cat. No. GLS96CC; [Glenbio Colour Compensation Kit](#) (Needed for Roche Lightcycler and Z480 RT PCR Systems)

NEW

## SARS-CoV-2 Panel Set (RUO) for MassARRAY system



Laboratories require fast and reliable methods to detect SARS-CoV-2 to meet the demands of the global outbreak. Current SARS-CoV-2 detection methods either have long turnaround times due to multiple steps or are limited in the number of samples that can be tested per run.

**ACCURATE DETECTION** - Five SARS-CoV-2 assays multiplexed into one well targeting the nucleocapsid (N) gene, ORF1, and ORF1a/b genes.

**RAPID RESULTS** - Simplified workflow combines reverse transcription and amplification. Generate results within 8 hours from RNA extraction.

**MAXIMIZE THROUGHPUT** - Process up to eight 96-well or six 384-well plates in a full workday with ability to process two more plates overnight.

**SAVE TIME & MONEY** - Low-cost reagents and automated results reporting saves lab resources.

Cat. No. 13274F; [SARS-CoV-2 Panel Set \(RUO\) - CPM \(10x96\)](#)

[DATASHEET](#)



# Antibody tests detecting COVID-19 antibodies

## Novel Coronavirus COVID-19 IgG ELISA kit

This ELISA kit is designed, developed, and produced for the qualitative measurement of the human anti-COVID-19 IgG antibody in serum. This assay utilizes the microplate based enzyme immunoassay technique.

### Main characteristics

- Principle: Indirect immunoassay
- Sample type: serum, Sample volume: 10 µL
- Assay incubation: 80 minutes, RT
- Total wash steps: 2; LOD: 5 IU/mL
- Repeatability: CV <15%, Reproducibility: CV <20%

Cat. No. GLKT1032 Novel Coronavirus COVID-19 IgG ELISA kit

DATASHEET



## Novel Coronavirus COVID-19 IgM ELISA kit

This ELISA kit is designed, developed, and produced for the qualitative measurement of the human anti-COVID-19 IgM antibody in serum. This assay utilizes the microplate based enzyme immunoassay technique.

### Main characteristics

- Principle: Capture method
- Sample type: serum, Sample volume: 20 µL
- Assay incubation: 80 minutes, 37 °C
- Total wash steps: 2; LOD: 5 IU/mL
- Repeatability: CV <15%; Reproducibility: CV <20%

Cat. No. GLKT1033 Novel Coronavirus COVID-19 IgM ELISA kit

DATASHEET



# INDEX

## PRODUCTS FOR RESEARCH

<i>Extraction kits for Viral RNA purification</i>	<b>7</b>
<i>Real Time PCR for SARS-CoV-2 detection</i>	<b>8</b>
<i>Whole Viral Genome detection</i>	<b>8</b>
<i>ELISA kits</i>	<b>9</b>
<i>Antibodies and Recombinant Proteins</i>	<b>10</b>
<i>Biological Therapeutic Strategies</i>	<b>14</b>
<i>Eco-friendly reagents for immunoassays</i>	<b>16</b>
<i>DNA decontamination reagents</i>	<b>17</b>
<i>Micropipette filter tips</i>	<b>18</b>

# Extraction and purification kits for viral RNA

NEW

## EXTRACTME for Viral RNA isolation from swabs

RUO



The *EXTRACTME* VIRAL RNA KIT is designed for the rapid and efficient purification of high quality viral RNA from swabs. The kit is specifically designed to isolate viral nucleic acid from a variety of RNA viruses including SARS-CoV-2 (the virus that causes COVID-19). The isolation protocol and buffer formulation were optimized for high isolation efficiency and RNA purity.

**Type of Sample:** Swab in viral transport medium (e.g., nasopharyngeal swabs, mouth and throat swabs)

Cat. No.: EM39-250; [EXTRACTME VIRAL RNA KIT](#), 250 reactions

[DATASHEET](#)

## Magnetic bead based isolation of viral DNA and viral RNA from blood, serum, plasma, saliva and other body fluids

### Clean Viral DNA & RNA Kit

RUO



The Clean Viral DNA/RNA Kit is designed for the high throughput and reliable isolation of viral DNA and viral RNA from whole blood, serum, plasma, saliva and other body fluids. The kit allows for the RNA extraction from Coronavirus (SARS-CoV-2 / COVID-19), extraction total nucleic acid from nasopharyngeal SWABS, nasopharyngeal aspirates and bronchoalveolar lavage samples (BAL) samples. Due to the use of our magnetic bead purification technology, the protocol can easily be automated on liquid handling workstations (e.g. Dynamic Devices, Beckman, Hamilton, Tecan, Caliper, Perkin Elmer, Agilent and Eppendorf).

Cat. No.: CV-DR2304 [Clean Viral DNA / RNA Kit](#) (2304 preparations)

[DATASHEET](#)

Cat. No.: MDKT00210096 [MagSi-NA Pathogens](#) (96 preparations)

**EXTRACTME<sup>®</sup>**  
VIRAL RNA KIT

**Viral RNA isolation from swabs**

- Rapid and efficient extraction
- Pure and intact viral RNA
- RNA ready to use in downstream applications

**blirt**

**NEW PRODUCT**

The graphic features a 3D model of a coronavirus particle with a blue textured surface and red spike proteins. A yellow double helix representing viral RNA is shown being extracted from the particle. In the background, a gloved hand is shown using a pipette tip to handle a sample.

# Real-time PCR for the new SARS-nCoV-2 detection

## SARS-CoV-2 Confirm



SARS-CoV-2 Confirm is a RT-qPCR detection system for the RNA of the novel Severe Acute Respiratory Syndrome Coronavirus 2 (SARS-CoV-2). This primers/probes system allows qualitative detection of the novel coronavirus SARSCoV-2 (COVID-19) in extracted RNA samples.



This product is used in combination with the universal one-step RT-PCR enzyme mix ConviFlex™ RT-Taq Mix (Cat. No. 192-0025/192-0100/192-0250) for qualitative detection of SARS-CoV-2 in RNA samples.

Cat. No.: 171-02-0100 **SARS-CoV-2 Confirm** (primer mix nCoV-2; positive control) [DATASHEET](#)

## ConviFlex™ RT-Taq Mix



ConviFlex™ RT-Taq Mix is a lyophilized, one-step RT-PCR master mix, consisting of all core components required for reverse transcription and PCR amplification. Only user-based RNA templates, primers, and probes (for RT-qPCR) are required to carry-out in one step a complete RT-qPCR-based analysis.



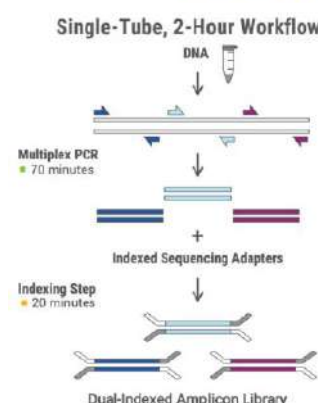
Cat. No.: 192-0025/-0100/-0250 **Conviflex RT-Taq Mix** (OneStep RT-PCR kit)

[DATASHEET](#)

# Whole viral genome single-tube NGS assay

## Swift Amplicon SARS-CoV-2 research panel

The Swift Amplicon SARS-CoV-2 Panel offers a robust NGS workflow that provides optimal coverage and NGS data quality on Illumina® sequencing platforms. This kit leverages patented multiplex PCR technology, enabling library construction from 1 st-strand or 2nd-strand cDNA using tiled primer pairs to target the entire 29.9 kb viral genome with a single pool of multiplexed primer pairs. Primers were designed against the NCBI Reference Sequence NC\_045512.2 (Severe acute respiratory syndrome coronavirus 2 isolate Wuhan-Hu-1, complete genome).



Feature	Specification
Design Coverage	98% (29,313 of 29,903 total bases)
Panel Information	341 amplicons, sized 116-255 bp (average 150 bp)
Input Material	1 <sup>st</sup> or 2 <sup>nd</sup> strand cDNA
Time	2 hours cDNA-to-Library
Components Provided	Target-specific multiplex primer pool • PCR and library prep reagents 8 x 12 Combinatorial Dual Indexed Adapters Note: kit does not include RT module or magnetic beads
Multiplexing Capability	96 included • Up to 384 (see below)
Recommended Depth	1M reads per library

Cat. No. AL-COV48 **Swift Amplicon SARS-CoV-2 Panel (48 rxns)**

[MASTER FILE](#)

[DATASHEET](#)



# ELISA kits for COVID-19

## SARS-CoV-2 Spike S1-RBD IgG & IgM ELISA Detection Kit

RUO



SARS-CoV-2 Spike S1-RBD IgG & IgM ELISA Detection Kit is an indirect ELISA detection tool which can be used for evaluation of anti-SARS-CoV-2 Spike S1-RBD IgG or IgM in samples. When the positive control and specimen are added to capture plate, which has been pre-coated with recombinant SARS-CoV-2 spike protein S1-RBD, the positive control and SARS-CoV-2 spike protein S1-RBD antibodies in specimen can be captured on the plate.

Cat. No. 30665 [SARS-CoV-2 Spike S1-RBD IgG & IgM ELISA Detection Kit](#)

DATASHEET

NEW

## Human anti-SARS-CoV2 IgM, IgG ELISA Kits

RUO



FineTest



anti-SARS-CoV2 IgM ELISA Kit allows for the in vitro quantitative determination of anti-SARS-CoV2 IgM concentrations in plasma, tissue homogenates and other biological fluids.

Range: 0.78-50ng/mL

Cat. No. EH4940; [Human anti-SARS-CoV2 IgM ELISA Kit](#)

DATASHEET

For quantitative detection of Anti-SARS-CoV2 IgG in serum, plasma and other biological fluids.

Range: 3.906-250ng/mL; Cat. No. EH4397; [Human anti-SARS-CoV2 IgG ELISA Kit \(quantitative\)](#)

DATASHEET

# Monitor the immune response from patients exposed to COVID-19 or other viruses

## ProcartaPlex™

RUO

invitrogen  
eBioscience



Monitor and screen the immune response from plasma, serum, cell culture supernatants, and other bodily fluids with either 65-plex or 45-plex preconfigured ProcartaPlex™ immunoassay kits that allow you to look at up to 65 targets of protein using Luminex xMAP Technology.

- Fast and easy
- Extended amount of data from a single sample
- Requires only small sample volumes (25-50 µL)

Check our catalog of [ProcartaPlex™ Multiplex Immunoassays](#)

## Luminex Assays

Multiplexing to save time,  
money and sample

# Antibodies and recombinant proteins for the study of SARS-CoV-2

GeneTex is proud to offer an extensive line of research antibodies and proteins to support the study of SARS-CoV-2, several of which were validated using virus-infected cell lysates. Please see the highlighted products below or click the button to see more product information.

**NEW**

## Antibodies for SARS-CoV-2 / COVID-19 Research



GeneTex

Cat. No.	Product Name	Clonality	Applications
<a href="#">GTX632604</a>	SARS-CoV / SARS-CoV-2 (COVID-19) spike antibody [1A9]	Ms mAb	WB, ICC/IF, FACS, IP, ELISA, sELISA
<a href="#">GTX01555</a>	SARS-CoV / SARS-CoV-2 (COVID-19) spike antibody [CR3022]	Hu mAb	ELISA, Neutralizing/Blocking
<a href="#">GTX632269</a>	SARS-CoV / SARS-CoV-2 (COVID-19) nucleocapsid antibody [6H3]	Ms mAb	WB, ICC/IF, ELISA, sELISA
<a href="#">GTX632696</a>	SARS-CoV / SARS-CoV-2 (COVID-19) NSP8 antibody [5A10]	Ms mAb	WB
<a href="#">GTX632602</a>	SARS-CoV / SARS-CoV-2 (COVID-19) ORF7a antibody [3C9]	Ms mAb	WB, ICC/IF
<a href="#">GTX135356</a>	SARS-CoV-2 (COVID-19) spike antibody	Rb pAb	WB, ICC/IF, ELISA
<a href="#">GTX135360</a>	SARS-CoV-2 (COVID-19) spike antibody	Rb pAb	WB, ICC/IF, ELISA
<a href="#">GTX135384</a>	SARS-CoV-2 (COVID-19) Spike S1 antibody	Rb pAb	WB, ICC/IF
<a href="#">GTX135385</a>	SARS-CoV-2 (COVID-19) Spike RBD antibody	Rb pAb	WB, ICC/IF
<a href="#">GTX135386</a>	SARS-CoV-2 (COVID-19) Spike S2 / S2' antibody	Rb pAb	ICC/IF, ELISA
<a href="#">GTX135357</a>	SARS-CoV-2 (COVID-19) nucleocapsid antibody	Rb pAb	WB, ICC/IF, ELISA
<a href="#">GTX135361</a>	SARS-CoV-2 (COVID-19) nucleocapsid antibody	Rb pAb	WB, ICC/IF, ELISA, sELISA
<a href="#">GTX101395</a>	ACE2 antibody [N1N2], N-term	Rb pAb	WB, IHC-P, FACS
<a href="#">GTX100743</a>	TMPRSS2 antibody [N2C3]	Rb pAb	WB

Your Expertise  
Our Antibodies  
Accelerated Discovery

**FREE!**

Promotion code  
**GTX25**

**Quickly Stock up**  
**Loading controls / Secondary abs**

NEW

## Flow Cytometry-Competent Human ACE2 Monoclonal Antibodies

AdipoGen®  
LIFE SCIENCES

Cat. No.	Product Name	Isotype	Applications
<a href="#">AG-20A-0032</a>	anti-ACE2 (human), mAb (AC18F)	Mouse IgG1k	ELISA, FACS, WB
<a href="#">AG-20A-0032B</a>	anti-ACE2 (human), mAb (AC18F) (Biotin)	Mouse IgG1k	ELISA, FACS, WB
<a href="#">AG-20A-0032TD</a>	anti-ACE2 (human), mAb (AC18F) (ATTO 488)	Mouse IgG1k	FACS
<a href="#">AG-20A-0032TS</a>	anti-ACE2 (human), mAb (AC18F) (ATTO 647N)	Mouse IgG1k	FACS
<a href="#">AG-20A-0037</a>	anti-ACE2 (human), mAb (AC384)	Mouse IgG1k	ELISA, WB
<a href="#">AG-20A-0037B</a>	anti-ACE2 (human), mAb (AC384) (Biotin)	Mouse IgG1k	ELISA, WB
<a href="#">AG-20A-0037PF</a>	anti-ACE2 (human), mAb (blocking) (AC384)	Mouse IgG1k	FUNC (Blocking), ELISA, WB
<a href="#">AG-25A-0042</a>	anti-ACE2 (human), pAb	Rabbit	ELISA, WB

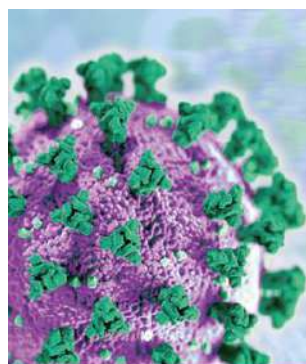
NEW

## Recombinant Proteins for SARS-CoV-2 / COVID-19 Research



GeneTex

Cat. No.	Product Name	Expression System
<a href="#">GTX01548-pro</a>	SARS-CoV-2 (COVID-19) Spike S1 protein, His and Avi tag (active)	HEK293
<a href="#">GTX01554-pro</a>	SARS-CoV-2 (COVID-19) Spike S1 protein, His tag (active)	HEK293
<a href="#">GTX01546-pro</a>	SARS-CoV-2 (COVID-19) Spike RBD protein, His tag (active)	HEK293
<a href="#">GTX01547-pro</a>	SARS-CoV-2 (COVID-19) Envelope protein, His and Avi tag	E. coli.
<a href="#">GTX135592-pro</a>	SARS-CoV-2 (COVID-19) nucleocapsid protein, His tag	HEK293
<a href="#">GTX135357-pro</a>	SARS-CoV-2 (COVID-19) nucleocapsid protein, His tag	E. coli.
<a href="#">GTX01557-pro</a>	SARS-CoV-2 (COVID-19) 3C-like Proteinase protein, His and Avi tag	E. coli.
<a href="#">GTX01550-pro</a>	Human ACE2 protein, His and Avi tag	HEK293



NEW

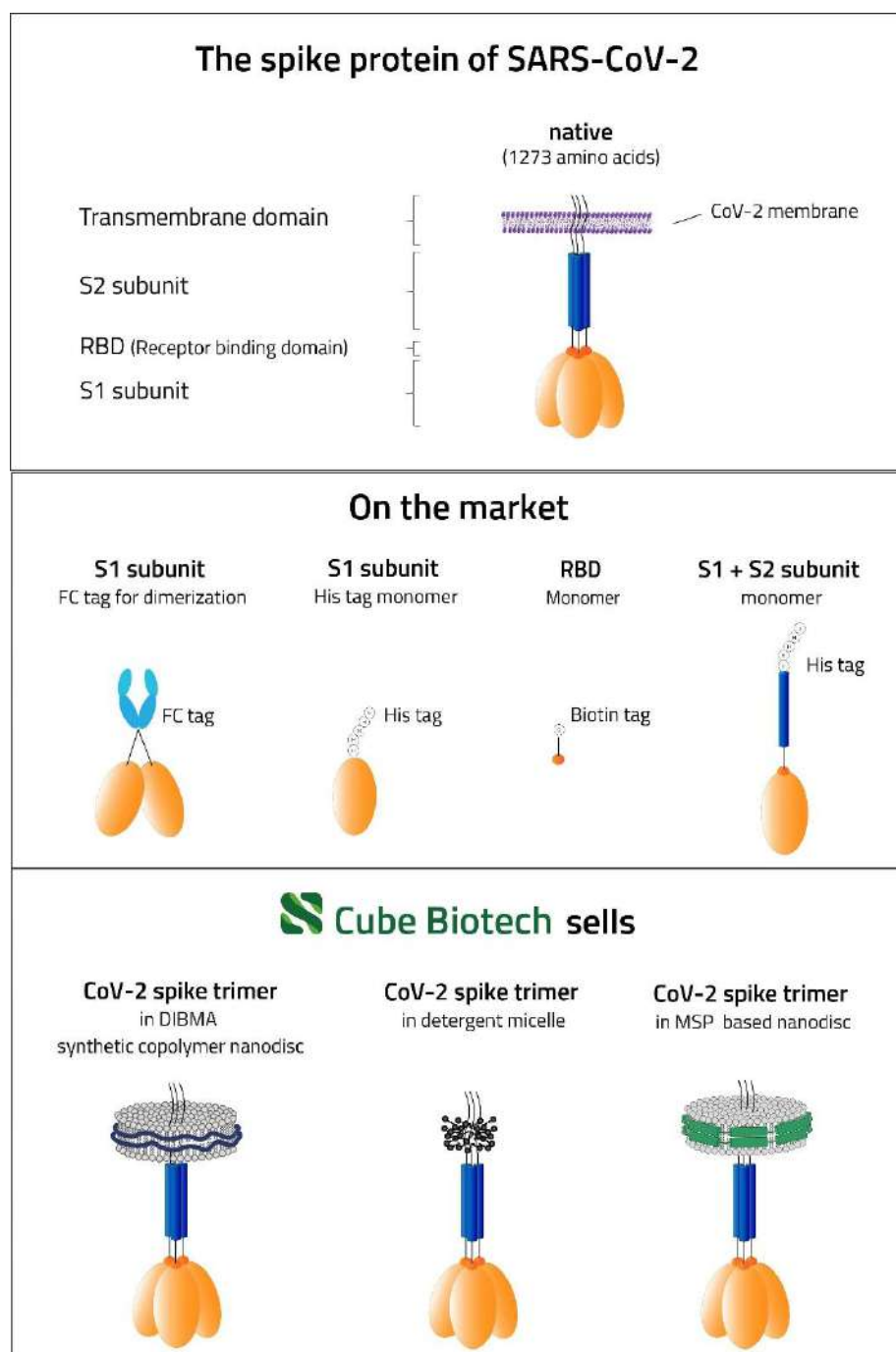
## SARS-CoV-2 · COVID-19 · Insights

Antibodies, Recombinant Proteins,  
Diagnostic Immunoassays & Small Molecules

DISCOVER MORE &gt;

Trying to find a working treatment for the disease is crucial and Cube Biotech contributes to the global research. As leading experts in the field of membrane protein stabilization and solubilization it is a logical step for us to provide you with aliquots of pure & full length ACE2 , SPIKE and TMPRSS2 protein in [MSP and synthetic nanodiscs](#).

Protein	Original Function	Status of the protein
ACE2	Metalloprotease on the cell's surface	Full length membrane protein stabilized in <a href="#">nanodiscs</a>
TMPRSS2	Serine protease located on the cell's surface	Full length membrane protein stabilized in <a href="#">nanodiscs</a>
SPIKE	SARS-CoV2's surface protein	Full length membrane protein stabilized in <a href="#">nanodiscs</a>





NEW

## Recombinant Proteins for ACE2 & COVID-19 Research



Cat. No.	Product Name	Expression System	Application
<a href="#">AG-40B-0192</a>	ACE2 (human) (rec.)	HEK293	Inhibits SARS-CoV-2 infection.
<a href="#">AG-40B-0192B</a>	ACE2 (human) (rec.) (Biotin)	HEK293	Inhibits SARS-CoV-2 infection.
<a href="#">CHI-B232008</a>	ACE2 (human) (rec.) (His)	HEK293	Inhibits SARS-CoV-2 infection.
<a href="#">CHI-B232006</a>	ACE2 (human):Fc (human) (rec.)	HEK293	Inhibits SARS-CoV-2 infection.
<a href="#">AG-40B-0193</a>	ACE2 (mouse) (rec.)	HEK293	Soluble mouse ACE2 negative control.
<a href="#">CHI-B232004</a>	SARS-CoV-2 Spike Protein S1 (RBD) (rec.) (His)	HEK293	For drug and antibody screening and immunization.
<a href="#">CHI-B249001</a>	SARS-CoV-2 Spike Protein S1 (RBD) (GST-His)	HEK293	For drug and antibody screening and immunization.
<a href="#">CHI-B232003</a>	SARS-CoV-2 Spike Protein S1 (RBD):Fc (human)	HEK293	For drug and antibody screening and immunization.
<a href="#">AG-40B-0194</a>	SARS-CoV-2 Spike Protein S1 (RBD):Fc (human)	HEK293	For drug and antibody screening and immunization.
<a href="#">CHI-B233501</a>	SARS-CoV-2 Nucleocapsid Protein (rec.) (His)	E.coli	For drug screening applications.
<a href="#">SBB-DE0024</a>	PLpro (SARS Coronavirus) (rec.) (His)	E.coli	Involved in the processing of the viral polyprotein.
<a href="#">SBB-PS0002</a>	ISG15 (human) (rec.) (Rhodamine 110)	E.coli	PLPro substrate. Inhibits viral budding.

NEW

## Cell Pellet Blocks for SARS-CoV-2 / COVID-19 Research



Cat. No.	Product Name	Expression System
<a href="#">GTX435640</a>	SARS-CoV-2 (COVID-19) Spike FFPE Cell Pellet Block	HEK293
<a href="#">GTX435643</a>	SARS-CoV-2 (COVID-19) Spike (S1) FFPE Cell Pellet Block	HEK293
<a href="#">GTX435644</a>	SARS-CoV-2 (COVID-19) Spike (S2) FFPE Cell Pellet Block	HEK293
<a href="#">GTX435641</a>	SARS-CoV-2 (COVID-19) Nucleocapsid FFPE Cell Pellet Block	HEK293
<a href="#">GTX435642</a>	SARS-CoV-2 (COVID-19) Envelope FFPE Cell Pellet Block	HEK293
<a href="#">GTX435645</a>	SARS-CoV-2 (COVID-19) Membrane FFPE Cell Pellet Block	HEK293

# Biological Therapeutic Strategies against SARS-CoV-2

NEW

## SARS-CoV-2 Inhibitor Screening Kit



The SARS-CoV-2 Inhibitor Screening Kit contains key reagents required to facilitate identification of SARS-CoV-2 inhibitors. This inhibitor screen is based on a colorimetric ELISA kit, which measures the binding of the RBD of the Spike S protein from SARS-CoV-2 to its human receptor ACE2. This assay allows to identify and characterize the effect of different inhibitory molecules including antibodies or chemicals on the prevention of binding of SARS-CoV-2 virus to any ACE2-expressing cells. It allows the in-house coating of the plate with either the SARS S1 protein or the ACE2 protein, allowing the customer to decide which type of inhibitors he wants to screen for. All required components for both approaches are provided and in addition an ACE2 human blocking antibody is provided as a positive control as a reference.

Cat. No. AG-48B-0001-KI01; [SARS-CoV-2 Inhibitor Screening Kit](#) (96 tests)

NEW

## Antiviral Compounds - Potential Small Molecule Therapeutics Against COVID-19

Product Name	PID	CAS Number	Target	Antiviral Activity
<a href="#">Amastatin . hydrochloride</a>	AG-CP3-7003	100938-10-1	Viral entry ANPEP	Viral Replication
<a href="#">Camostat mesylate</a>	AG-CR1-3716	59721-29-8	Viral entry. TMPRSS2	Viral Replication
<a href="#">Chloroquine . diphosphate</a>	AG-CR1-3721	50-63-5	Lysosome function.	Viral Replication
<a href="#">Hydroxychloroquine . sulfate</a>	AG-CR1-3720	747-36-4	Lysosome function.	Viral Replication
<a href="#">Darunavir</a>	AG-CR1-3712	206361-99-1	Papain-like viral protease	Viral Maturation/Replication
<a href="#">Darunavir . ethanolate</a>	AG-CR1-3724	635728-49-3	Papain-like viral protease	Viral Maturation/Replication
<a href="#">Ebselen</a>	AG-CR1-0031	60940-34-3	Main Protease (Mpro	Viral Transcription/Replication
<a href="#">EIDD-2801</a>	AG-CR1-3733	2349386-89-4	RNA-dependent RNA pol.	Viral Transcription/Replication
<a href="#">Elbasvir</a>	AG-CR1-3729	1370468-36-2	RdRP	Viral Replication
<a href="#">Famotidine</a>	AG-CR1-3730	76824-35-6	PLpro	Viral Replication
<a href="#">Favipiravir</a>	AG-CR1-3717	259793-96-9	RNA-dependent RNA pol.	Viral Transcription/Replication
<a href="#">Imatinib mesylate</a>	AG-CR1-3725	220127-57-1	Virion fusion	Viral Replication
<a href="#">Lopinavir</a>	AG-CR1-3715	192725-17-0	Coronavirus endopep.	Viral Maturation/Replication
<a href="#">Mycophenolic acid</a>	AG-CN2-0419	24280-93-1	SARS-CoV-2 papain-like	Viral Replication
<a href="#">Nafamostat mesylate</a>	AG-CR1-3731	82956-11-4	Viral entry TMPRSS2	Viral Replication

Product Name	PID	CAS Number	Target	Antiviral Activity
<a href="#">Nelfinavir . mesylate</a>	AG-CR1-3726	159989-65-8	Post-entry inhibitor	Viral Replication
<a href="#">Niclosamide</a>	AG-CR1-3643	50-65-7	Endosome acidification	Viral Replication
<a href="#">Niclosamide . ethanolamine</a>	AG-CR1-3644	1420-04-8	Endosome acidification	Viral Replication
<a href="#">Nitazoxanide</a>	AG-CR1-3723	55981-09-4	Viral hemagglutinin. Viral IE2	Viral Maturation/Transcription
<a href="#">Oseltamivir . phosphate</a>	AG-CR1-3714	204255-11-8	Viral neuraminidase	Viral Replication
<a href="#">Remdesivir</a>	AG-CR1-3713	1809249-37-3	RdRps	Viral Transcription/Replication
<a href="#">Remdesivir Metabolite GS-441524</a>	AG-CR1-3722	1191237-69-0	RdRps	Viral Transcription/Replication
<a href="#">Ribavirin</a>	AG-CR1-3719	36791-04-5	RdRps	Viral Transcription/Replication
<a href="#">Ritonavir</a>	AG-CR1-3683	155213-67-5	Coronavirus endopeptidase	Viral Maturation/Replication
<a href="#">Rosuvastatin . calcium salt</a>	AG-CR1-3728	147098-20-2	Main Protease M <sup>pro</sup>	Viral Replication
<a href="#">Ruxolitinib . phosphate salt</a>	AG-CR1-3645	1092939-17-7	JAK1/JAK2	Viral Replication
<a href="#">Ruxolitinib (free base)</a>	AG-CR1-3624	941678-49-5	JAK1/JAK2	Viral Replication
<a href="#">Saquinavir . mesylate</a>	AG-CR1-3727	149845-06-7	Main Protease M <sup>pro</sup>	Viral Replication
<a href="#">Shikonin</a>	AG-CN2-0487	517-89-5	Main Protease (M <sup>pro</sup> )	Viral Transcription/Replication
<a href="#">Tofacitinib</a>	AG-CR1-3625	477600-75-2	JAK1/JAK3	Viral Replication
<a href="#">Tofacitinib citrate</a>	AG-CR1-3732	540737-29-9	JAK1/JAK3	Viral Replication
<a href="#">Tofacitinib citrate</a>	CDX-T0461	540737-29-9	JAK1/JAK3	Viral Replication
<a href="#">Umifenovir . HCl [Arbidol]</a>	AG-CR1-3718	131707-23-8	Viral entry, Fusion	Viral Replication



## SWIFT AMPLICON SARS-CoV-2 RESEARCH PANEL

Whole viral genome single-tube NGS assay

## Solutions for ELISA applications

	INCREASE SENSITIVITY ↓	MINIMIZE BACKGROUND ↓	EXTEND SHELF LIFE ↓	IMPROVE REPRODUCIBILITY ↓
Block & Stabilize ELISA Plate	WellChampion	WellChampion	WellChampion	WellChampion
Samples, Standards & Controls	Synthetic Blocking Buffer, ELISA	Synthetic Blocking Buffer, ELISA		
Dilute & Stabilize Conjugates	Sample X-tra	Sample X-tra		
Enhanced Conjugates	EffectDiluent	EffectDiluent	Protein-StabilPLUS	Protein-StabilPLUS
Detection with Substrates	Antibody Enhancer MultiBOOSTER	UNI-StabilPLUS	HRP-StabilPLUS	Antibody Enhancer
	Enhanced Strept-HRP			UNI-StabilPLUS HRP-StabilPLUS AP-StabilPLUS
	Enhanced antibody conjugates			
	TMB X-tra/TMB X-tnd	TMB ONE/TMB PLUS2	TMB ONE/TMB PLUS2	
	pNPP	pNPP ONE	pNPP ONE	

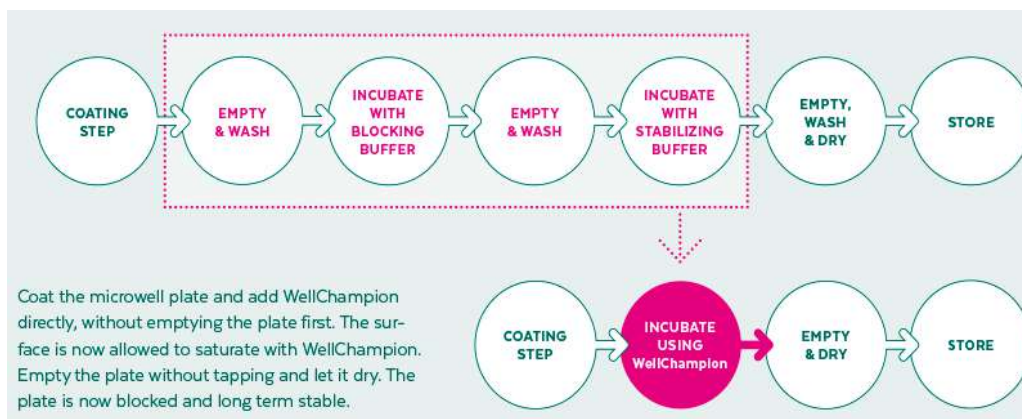
When developing and designing a new immunoassay, or optimizing an existing assay, the importance of being able to optimize as many parameters as possible become important. Kementec' products are designed to be used in many different combinations and to be used for optimizing immunoassays. Below is a range of suggestions for increasing assay sensitivity, for minimizing assay background, for extending assay shelf life and for improving assay reproducibility. Combinations and assay compositions must be optimized individually by the user.

## WellChampion® Microwell Plate Blocker/Stabilizer (Cat. No. 4900)

**RUO**

WellChampion® is a new generation dual-purpose reagent that is a simultaneous microwell plate blocker and stabilizer.

- Stabilizes and preserves microwell plates coated with protein or other biomolecules.
- Blocks any free binding sites on the microwell surface without creating any interference.
- Eliminates intermediate washing steps, which reduces water waste and speeding up the production process.



**Do you need some  
help to find an  
ELISA kit? Tell us**



# DNA Decontamination Reagents



## PCR Clean™

DNA contaminations in PCR work-areas can dramatically alter the PCR outcome resulting in false positive results and data misinterpretation. Originating from aerosols, contaminant DNA can be very resistant to elimination treatment and is a frequent cause of cross-contaminations between samples. PCR Clean™ is a ready-to-use spray solution for the elimination of DNA from a variety of surfaces within the PCR lab (PCR workstations, lab devices etc.). DNA and RNA are removed within seconds after use. The solution contains a surfactant and a non-alkaline and non-carcinogenic agent.



Cat. No.: 15-(2025, -2200, -2500) [PCR Clean™](#) (250 mL, 4x500 mL, 5 L)

## PCR Clean™ Wipes

PCR Clean™ Wipes are ready-to-use wet wipes for the elimination of DNA from a variety of surfaces and are particularly suitable for decontamination of PCR workstations, electrical devices, pipetting equipment. This product represents a great alternative to standard, inefficient cleaning methods (e.g. with sponges or paper towels), which might help spread contaminations rather than prevent them.



Cat. No.: 15-2001, 15-2002 [PCR Clean™ Wipes](#) (50 wipes & 5x50 refill sachets)

## LabClean™

LabClean™ is a concentrated DNA decontamination solution for routine laboratory cleaning, which eliminates DNA from large areas like floors and tiles. Its mode of action is based on a non-carcinogenic DNA-degrading chemistry.



Cat. No.: 15-4100 [LabClean™](#) (1 L)



## Micropipette Filter Tips

Labclinics pipette tips are available in a new released tip rack. The hinged lid and front latch support-handed operation during critical pipetting procedures. Each rack features inkjet inscription of volume and product lot number for excellent traceability down to the raw material level.



Cat. No.	Description	Tips / Rack	Purchase Unit (pcs)	Price
<b>Non-Low Retention Filtered Tips</b>				
<b>LAB10ULFNL</b>	10 µL Filtered Micro-Tips, clear, pre-sterile	96 tips	10 racks	36,00 €
<b>LAB10XLFNL</b>	10 µL Filtered Extended Length Tips, clear, pre-sterile	96 tips	10 racks	36,00 €
<b>LAB10EFNL</b>	10 µL Filtered Eppendorf-style Tips, clear, pre-sterile	96 tips	10 racks	36,00 €
<b>LAB20ULFNL</b>	20 µL Filtered Tips, clear, pre-sterile	96 tips	10 racks	36,00 €
<b>LAB100ULFNL</b>	100 µL Filtered Tips, clear, pre-sterile	96 tips	10 racks	36,00 €
<b>LAB200ULFNL</b>	200 µL Filtered Tips, clear, pre-sterile	96 tips	10 racks	36,00 €
<b>LAB1000ULFNL</b>	1000 µL Filtered Tips, clear, pre-sterile	96 tips	8 racks	36,00 €
<b>Low Retention Filtered Tips</b>				
<b>LAB10ULF</b>	10 µL Filtered Micro-Tips, clear, pre-sterile	96 tips	10 racks	42,00 €
<b>LAB10XLF</b>	10 µL Filtered Extended Length Tips, clear, pre-sterile	96 tips	10 racks	42,00 €
<b>LAB10EF</b>	10 µL Filtered Eppendorf-style Tips, clear, pre-sterile	96 tips	10 racks	42,00 €
<b>LAB20ULF</b>	20 µL Filtered Tips, clear, pre-sterile	96 tips	10 racks	42,00 €
<b>LAB100ULF</b>	100 µL Filtered Tips, clear, pre-sterile	96 tips	10 racks	42,00 €
<b>LAB200ULF</b>	200 µL Filtered Tips, clear, pre-sterile	96 tips	10 racks	42,00 €
<b>LAB1000ULF</b>	1000 µL Filtered Tips, clear, pre-sterile	96 tips	10 racks	42,00 €



# OUR LOCAL OFFICES

Give us a call today!



## BARCELONA

C/ Industria 54  
08025 - Barcelona  
Tel. 93 446 47 00  
[info@labclinics.com](mailto:info@labclinics.com)

## MADRID

P.º de los Pontones, 3  
28005 - Madrid  
Tel. 91 517 85 66  
[madrid@labclinics.com](mailto:madrid@labclinics.com)

## LEVANTE

Tel. 669 388 438  
[levante@labclinics.com](mailto:levante@labclinics.com)

## ANDALUCIA

Tel. 649 435 394  
[malaga@labclinics.com](mailto:malaga@labclinics.com)

## PORTUGAL

Tel. +351 918 338 242  
[portugal@labclinics.com](mailto:portugal@labclinics.com)