

Agrisera Antibodies



**25% discount on
chosen tag antibodies**

**Use discount code
Tag2021**

Valid Jan-Dec 2021

aadA1 Aminoglycoside adenyltransferase (chloroplast transformation marker).....	AS09 580
BFP, GFP, YFP Fluorescence Protein, clone 3A6.....	AS20 4485
c-myc (monoclonal, Clone 9E10).....	AS20 4454
c-myc (polyclonal).....	AS09 601
DYKDDDDK (binds to Sigma FLAG®) (chicken antibody, polyclonal).....	AS20 4379
DYKDDDDK (binds to Sigma FLAG®, clone FG4R).....	AS15 2871
GFP Green Fluorescence Protein (affinity purified).....	AS15 2987
GST-tag (mouse monoclonal, clone GST.B6).....	AS15 2861
GST-tag (rabbit antibody, polyclonal).....	AS17 4147
GUS Beta-glucuronidase.....	AS16 3689
HA (chicken polyclonal).....	AS20 4463
His-tag 6xHis (monoclonal, Clone 2C5.1).....	AS20 4457
His-tag 6xHis (polyclonal).....	AS19 4255
LUC Luciferase (firefly) (affinity purified antibodies).....	AS16 3691A

Tag antibodies available

**Biotin | Conjugates | CRISPR | DYKDDDDK (binds to SigmaFLAG®)
FITC | GAL4/GUS/LUC/others | GFP/YFP/RFP/CFP | GST | HA
His | MBP | Myc | S | T7 | TRITC | V5**

Tag antibody set

This set contains five antibodies against different epitope tags and a matching secondary antibody of high titer. Suitable for screening purposes.

Product #:AS17 4127

Product name.....	Product no
Cas9.....	AS16 3690
HA.....	AS12 2220
LUC.....	AS16 3691
C-YFP.....	AS11 1775
N-YFP.....	AS11 1776
Goat anti-rabbit, HRP.....	AS09 602

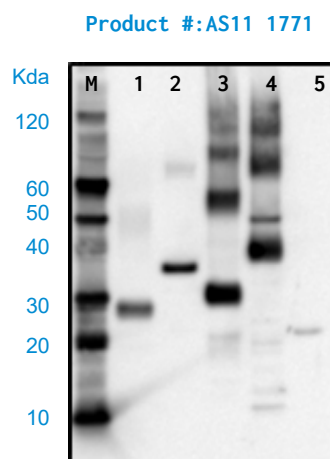


His-tag

Product name.....	Product number	Applications
His-tag 6xHis.....	AS11 1771 ..	Dot, IP, IL, WB
6x Histidine, Biotin Conjugated.....	AS15 2934	WB
6x Histidine, conjugated to DyLight® 488.....	AS15 2928	HTS
6x Histidine, conjugated to DyLight® 550.....	AS15 2929	IL
6x Histidine, conjugated to DyLight® 650.....	AS15 2933 ..	HTS, IF, IHC, WB
6x Histidine, HRP conjugated.....	AS15 2930	WB
6x Histidine, Unconjugated (1 mg).....	AS15 2936 ..	CBA, FL.cyt, MA, MPI

Application Example

500 femtomoles of His-tagged proteins **IsiA**, **NifH**, **PsbA**, **PsbB** and **PetC**. Apparent molecular weight of recombinant proteins: **IsiA (1) - 27 kDa**, **NifH (2) - 34 kDa**, **PsbA (3) - 30-37 kDa**, **PsbB (4) - 40 kDa**, **PetC (5) - 23 kDa**.



HA-tag

Product name.....	Product number	Applications
HA, conjugated to Alkaline Phosphatase.....	AS15 2921	WB
HA, conjugated to Biotin.....	AS15 2922	WB
HA, conjugated to DyLight® 550.....	AS15 2920	IL
HA, conjugated to DyLight® 650.....	AS15 2925	Flow cyt, CBA
HA, conjugated to DyLight®488.....	AS15 2919	FL, CBA
HA, conjugated to HRP.....	AS15 2924	WB
HA-tag.....	AS12 2220	WB

GFP-tag

Product name.....	Product number	Applications
GFP Green Fluorescence Protein (affinity purified).....	AS15 2987	ELISA, IF, WB
GFP Green Fluorescence Protein (protein A purified).....	AS15 3000	ELISA, WB
GFP Green Fluorescence Protein (total IgG).....	AS15 2999	ELISA, WB
GFP Green Fluorescence Protein (total IgY).....	AS15 2998	ELISA, WB
GFP Green Fluorescence Protein, peroxidase conjugated	AS15 3001 ...	ELISA, IHC, WB

Visit www.agrisera.com for our complete listing of tag antibodies and technical data