

---

# Instant Exosomes™

---

# Instant Exosomes™ - Specifications

Instant Exosomes™ are available from widely used human cancer cell lines. Currently, isolated exosomes are available from:

- COLO205 a human colon carcinoma – Cat code EX301
- LnCAP a human prostate carcinoma – Cat code EX302
- A375 a human malignant melanoma – Cat code EX303

Exosomes isolated from each cell line are available in two pack sizes:

- 50 µg (2 x 25 µg vials)
- 250 µg (10 x 25 µg vials)

Shipping temperature: 4 °C

Storage temperature: -20 °C

Price: A supplementary price file will be sent with pricing details

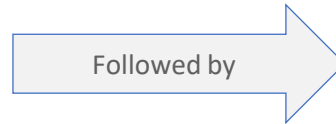
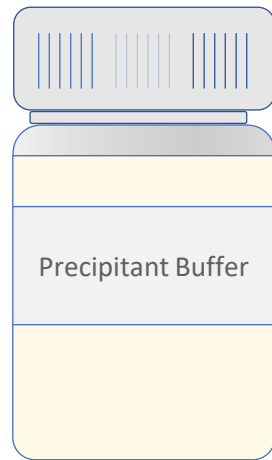
<https://www.cellgs.com/products/instant-exosomesand8482.html>



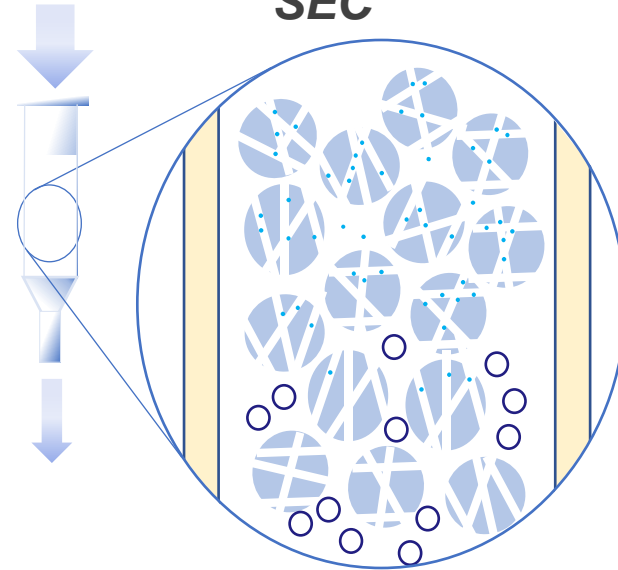
# Instant Exosomes™ - Isolation

Instant Exosomes™ are isolated with Exo-spin™ kits using a combination of precipitation and size exclusion chromatography (SEC).

## Precipitation



## SEC





### Principles of precipitation

*Exosomes are concentrated using a proprietary precipitant buffer*

*The precipitation method allows for the separation of solid substances from a given sample*

### Principles of size exclusion chromatography

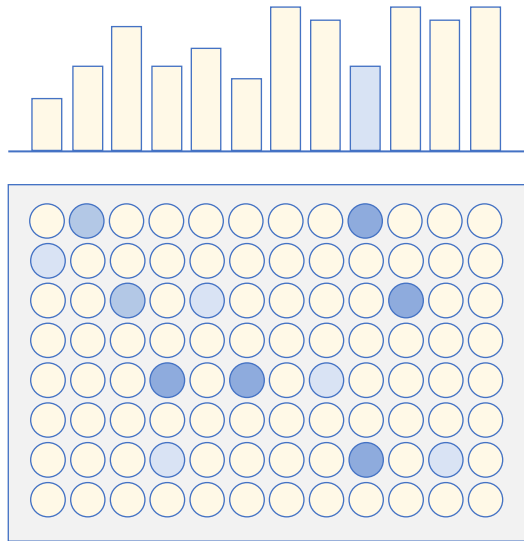
*Exosomes run outside the beads,  so elute first*

*Small particles and free proteins are trapped in the beads *

# Instant Exosomes™ - Characterization

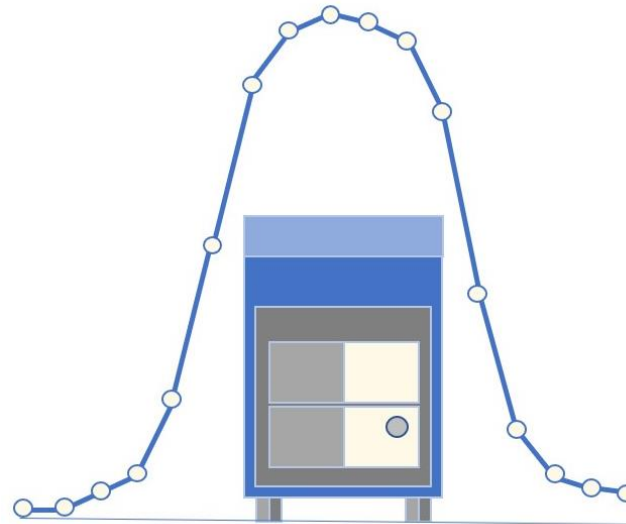
Instant Exosomes™ are characterized using the following methods:

## ExoLISA™ Assay



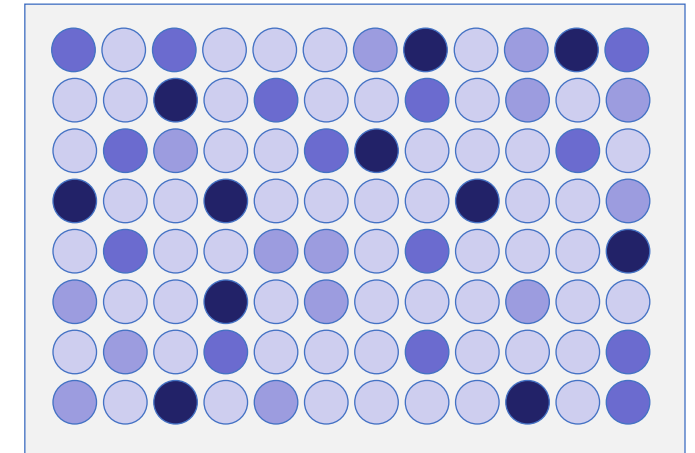
*Determines the expression of tetraspannin markers (CD9, CD63 and CD81). This also ensures that other surface proteins that are present should be detectable.*

## Nanoparticle Tracking Analysis (NTA)



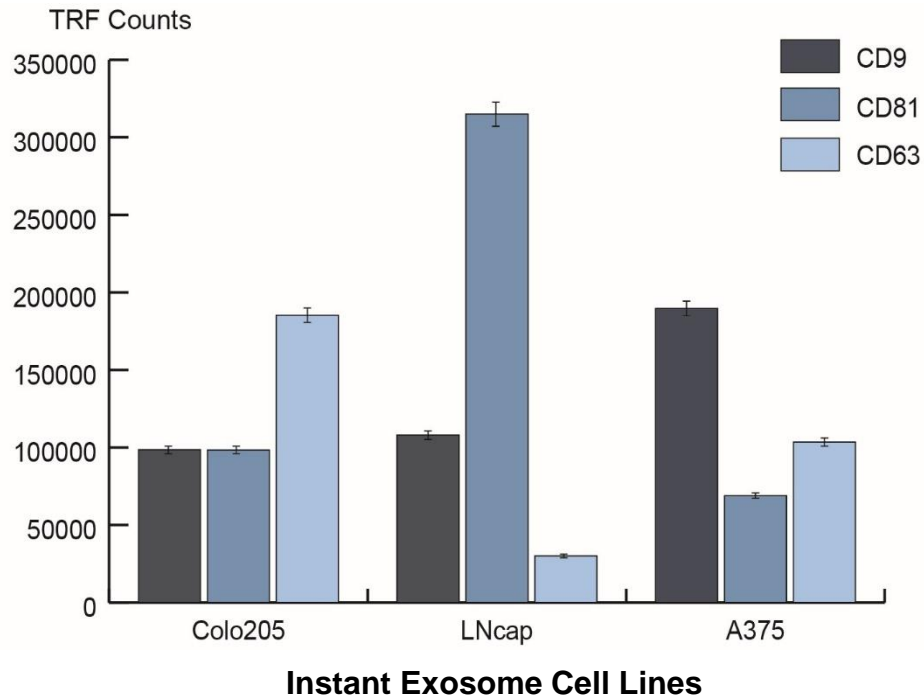
*Determines the particle concentration and size distribution*

## Bicinchoninic Acid (BCA) Assay

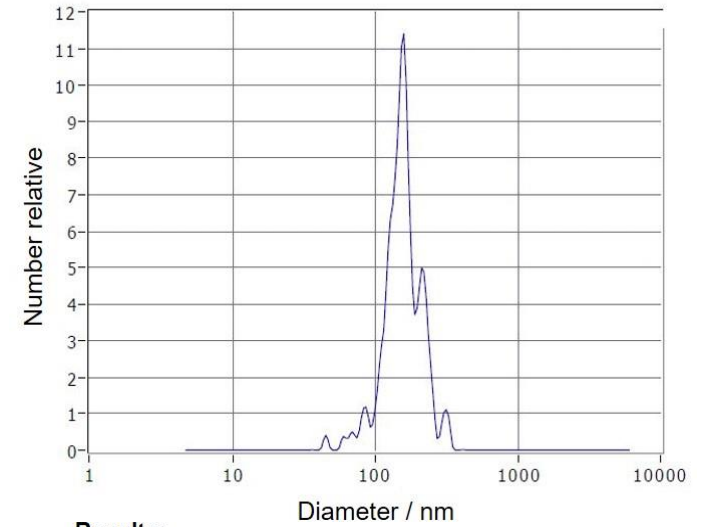


*Determines the overall protein content*

# Instant Exosomes™ - Example Data



*Commonly expressed exosomal markers assessed using the ExoLISA™ exosome detection assay are shown to be differentially expressed across Instant Exosomes™*



**Results:**

**Concentration:** 9.3E+9 Particles / mL

	Number	Concentration	Volume
<b>Median (X50)</b>	153.7	153.7	200.1
<b>Span</b>	48.9	48.7	59.2

*Characterization of Instant Exosomes™ with NTA, performed using the ZetaView® instrument. This determines the particle concentration and size distribution.*

## Instant Exosomes™ - Customer Feedback

**“I also compared Instant Exosomes™ with the lyophilized EVs that we had bought from (*a competitor*). I was very happy with LNCaP EV type and it seems to be the best lyophilized EV type that I had ever tested.”**